

Thermal Coating Repairs for Marine Applications

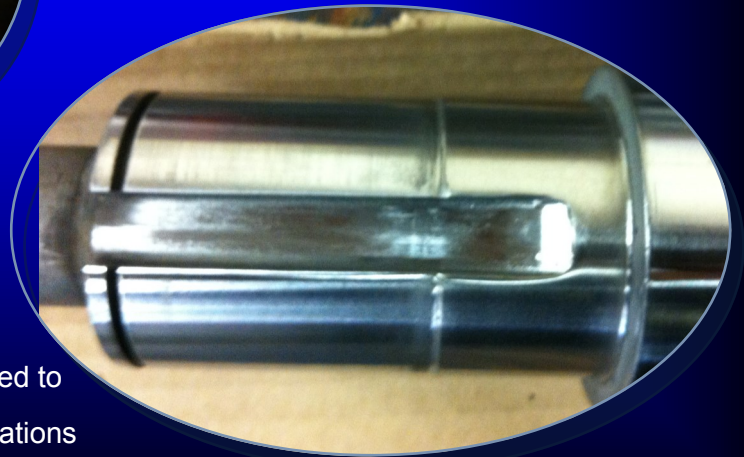
Thermal Coating is a fast economical and proven repair for common issues such as bearing surface wear and seal wear on a shaft.



(Above) A marine input pump shaft with a worn bearing fit over the keyway



(Left) Before Repair: A close up of the area to be rebuilt. Bearing sits partially over the key way area.



(Right) After Repair:

The bearing surface area is sized and finished to exact tolerances to meet customers specifications

Job: Seaspan Marine ULC - September 2013

www.istech.ca